

# FMW

Handheld Laser Welding Machine

## FLEXIBLE HANDHELD LASER WELDING TOOL WITH POWERFUL FUNCTIONS



Laser Power

**1.5-3kW**

Welding Thickness of SS

**0.5-7mm**

Welding Thickness of AL

**0.5-5mm**

### PRODUCT OVERVIEW

Three In One System, One Click Call



Integrated welding, cutting, and cleaning functions, equipped with a comprehensive process parameter package, saving you processing costs.

### TYPICAL PROCESSING

Swing Welding Technology



WOBBLE welding heads have the swing welding model which the facula can be adjusted with strong welding fault tolerance. The technology can compensate for the disadvantage of the small laser welding spot and extends the tolerance range and weld width of the machined part to obtain a better weld formation.

**EASE TO OPERATE**

### Handheld Welding Laser Head With Ergonomic Design



WOBBLE handheld welding laser head with ergonomic design can be operated easily and persist in working.

**STABLE & DURABLE**

### Dual Temperature and Control chiller



The machine is self-equipped with dual temperature and control chiller for constant temperature control heat dissipation and ensuring the core optical components heat dissipation with fiber laser, which are stable and efficient.

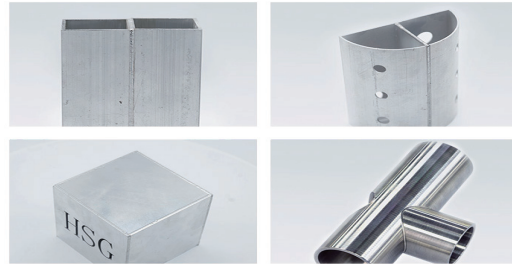
**CARE YOUR SAFETY**

### Safe Ground Wire

Workers, machine and instrument are well protected to make sure of no-break work in case of electric leakage.

**EASY TO OPERATE**

### Work-piece Welding In One Operation



Simple to operate and easy to train. The work-piece can be welded in one operation. The laser head is light, flexible and can weld any part of the work-piece, making welding work more efficient, safe, energy efficient and environmentally friendly.

**STABLE & DURABLE**

### Multiple Safeguards To Ensure Stable Operation



Adopting high flexibility main thread, undergoing several bending and tensile tests for inspection. High end chips paired with non-metallic casing greatly enhance anti-interference ability. Pull type collimation and focusing, making it easier to replace collimating focusing lenses. Dual protection lenses, fault monitoring, early warning, to prevent lens burning.



## TECHNICAL PARAMETERS

Model	FMW
Laser Power	1.5-2kW / 3kW
Working Mode	Continuous Welding / Pulse Welding
Welding Thickness	Stainless Steel/Carbon Steel: 0.5-7mm    Aluminum Galvanized sheet :0.5-5mm
Overall Dimensions	624×806×970mm / 724×896×1052mm

\*Information and images are for reference only. Final specifications and terms are subject to the contract and may change without notice.